



**NEURON CONSULT ZT**  
Pelikanstr.18, 4061 LINZ-PASCHING, Austria



## LAMMA ISLAND, HONG KONG

### CABLE ROUTE 275 kV FROM LAMMA ISLAND TO CYBER PORT

**OWNER: HONG KONG ELECTRIC**



**LOCATION**

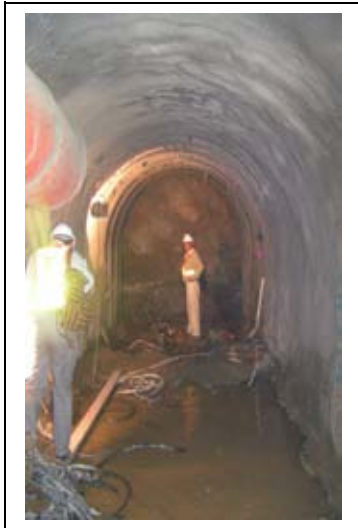
**SITE LOCATION**



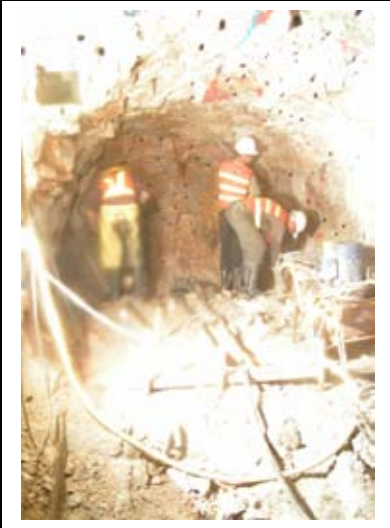
**PROJECT DESCRIPTION**  
LOCATED AT RECLAIMED SITE THE LAMMA POWER STATION IS DEVELOPING AN EXTENSION WITH A CAPACITY OF 1800 MW, CONSISTING OF 6 NATURAL-GAS FIRED UNITS BRINGING TOTAL INSTALLED CAPACITY TO 3755 MW. IN ORDER TO PROVIDE ELECTRICITY TO THE WIDER HONGKONG ISLAND AND NEW TERRITORIES AREA SEVERAL CABLE TUNNELS HAVE TO BE CONSTRUCTED ON BOTH LAMMA AND HONGKONG ISLAND. PRESENT ACTIVITIES ARE ON CABLE TUNNELS ON LAMMA ISLAND.

**SERVICES PROVIDED**  
CONSULTANCY AND SUPERVISION FOR SCL/NATM EXCAVATION METHOD IN SOFT GROUND AND IN ROCK.  
PERIOD OF WORK: 2004 - 2005

**PORTAL AT PAK KOK TSUI, NORTH SIDE**



**PAK KOK TSUI TUNNEL, SOUTH**



**PAK KOK TSUEN, NORTH**



**PAK KOK TSUEN, SOUTH**