



NEURON CONSULT ZT
 PELIKANSTR.18, 4061 LINZ-PASCHING, AUSTRIA

Metro Singapore, Circle Line , Section C855

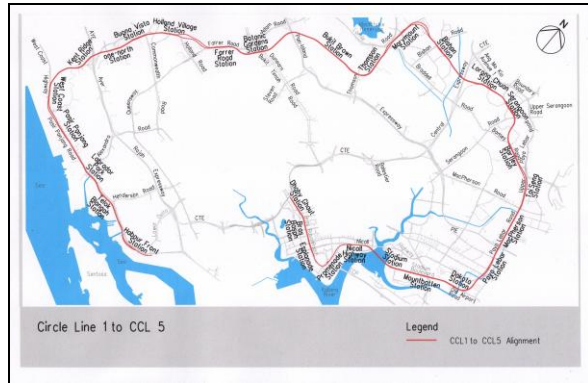
Stage 4 : Holland Village, Buona Vista and NUH Stations



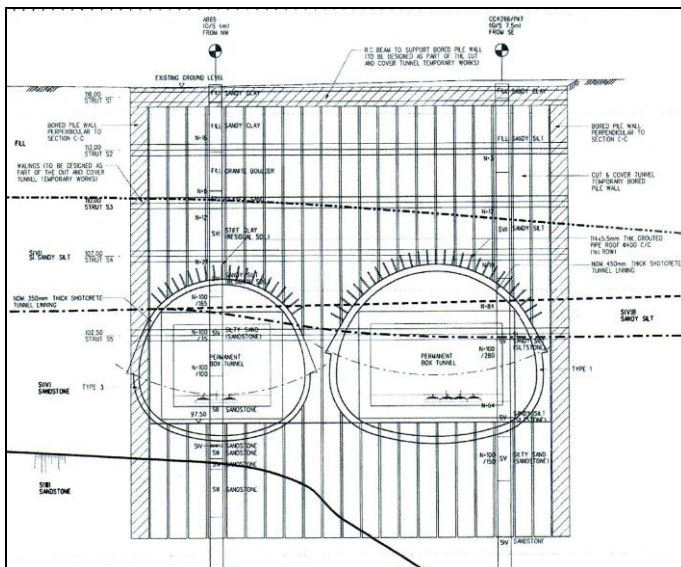
OWNER: LAND TRANSPORT AUTHORITY SINGAPORE



LOCATION



CIRCLE LINE



TWIN TBM STARTING CHAMBERS AT AYA SECTIONS

PROJECT DESCRIPTION

STAGE 4 OF THE CIRCLE LINE IS COVERING RUNNING TUNNELS AND METRO STATIONS HOLLAND VILLAGE, BUENA VISTA AND NUH. THEY WILL BE ALSO STARTING POINTS FOR TBM DRIVES STARTING FROM SCL/NATM SUPPORTED CHAMBERS AT THE BEGINNING OF THE SECTION C855. THE FINAL DESIGN HAS BEEN PROVIDED AS A PART OF DB PROJECT SCHEME

SERVICES PROVIDED

FINAL DESIGN OF PRIMARY SUPPORT FOR SCL/NATM PARTS OF STATIONS :

- TWIN TBM LAUNCH CHAMBERS AT AYER RAJAH EXPRESSWAY
- MALAYAN RAILWAY UNDERPINNING WORKS

PERIOD OF WORK: 2004 - 2006



HOLLAND VILLAGE STATION – ENTRANCE 1



BUONA VISTA STATION



NEURON CONSULT ZT
PELIKANSTR.18, 4061 LINZ-PASCHING, AUSTRIA